

Built Environment and Real Estate Prospects Seminar 2025



Alliance-Driven Success: Insights from Woh Hup's Journey

Woh Hup (Private) Limited
Neil Yong

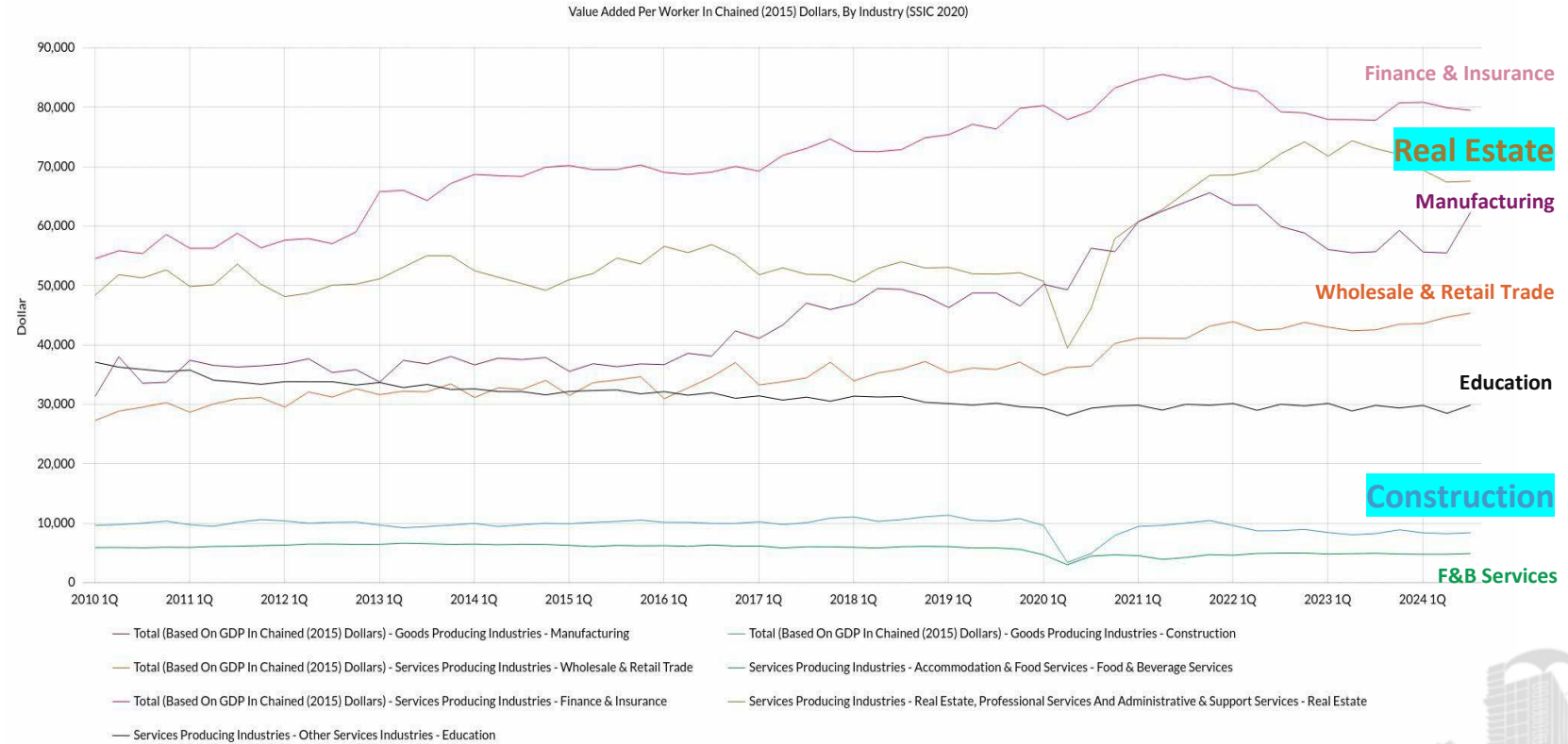
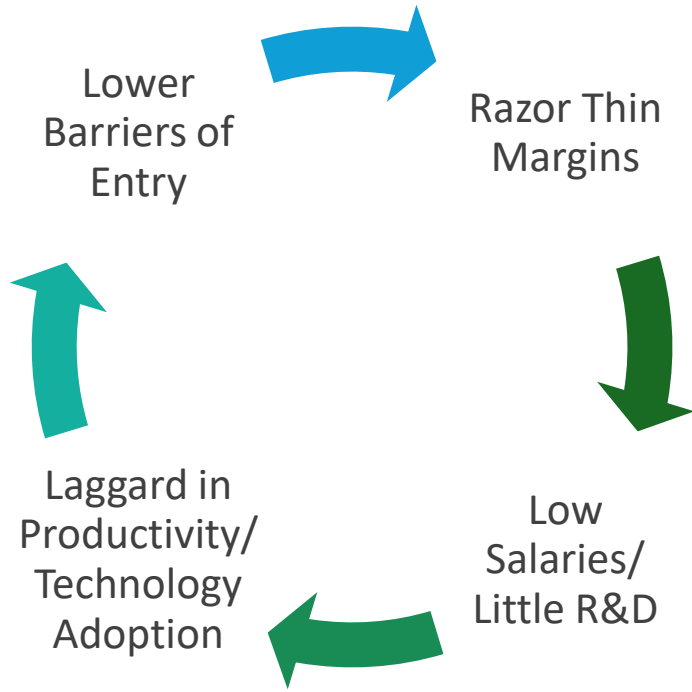
WHY?

**Embracing transformative practices – advancing
as a sector**

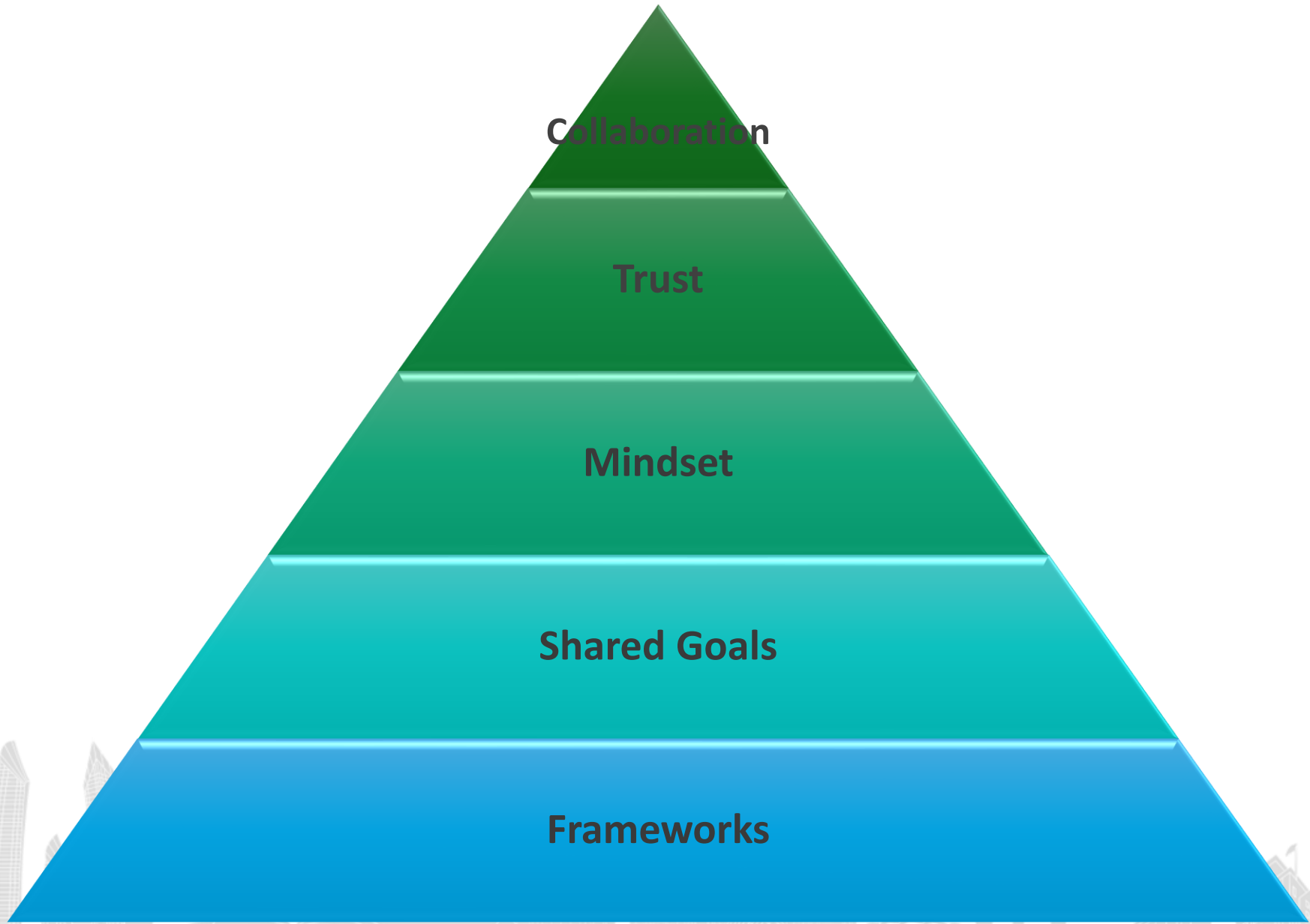
Alliance = Collaboration



Break Our Circular Problem



View the original table at <https://tablebuildersingstat.gov.sg/table/TS/M015691>



Collaboration

Trust

Mindset

Shared Goals

Frameworks

THE INFINITE GAME
 THE INFINITE GAME
THE INFINITE GAME
 SIMON SINEK
 THE INFINITE GAME
 THE INFINITE GAME
 THE INFINITE GAME
 THE INFINITE GAME

THE BESTSELLING AUTHOR OF
START WITH WHY
 AND
LEADERS EAT LAST


NEW YORK TIMES BESTSELLER

WHY HELPING OTHERS
 DRIVES OUR **SUCCESS**

GIVE
and
TAKE

ADAM GRANT
 AUTHOR OF ORIGINALS

"AS BRILLIANT AS IT IS WISE, THIS IS NOT JUST A BOOK—IT'S A NEW AND SHINING WORLDVIEW."
 —SUSAN CAIN, AUTHOR OF QUIET



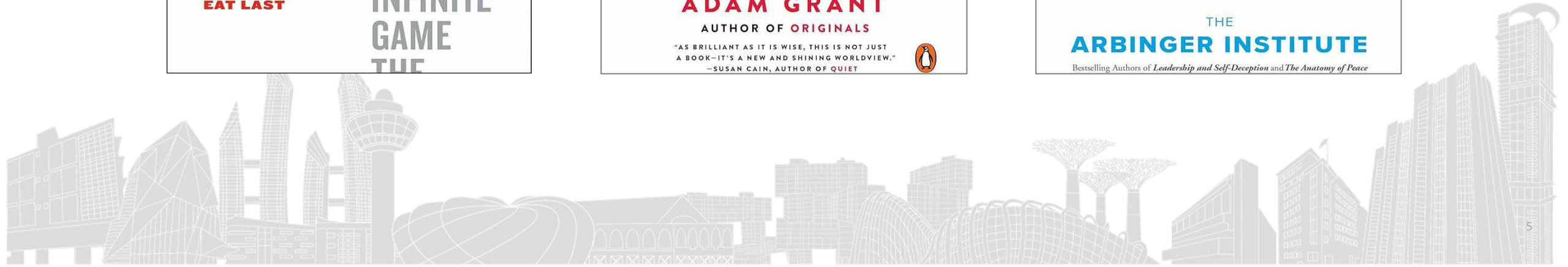
THE OUTWARD MIND SET

How to Change Lives and Transform Organizations

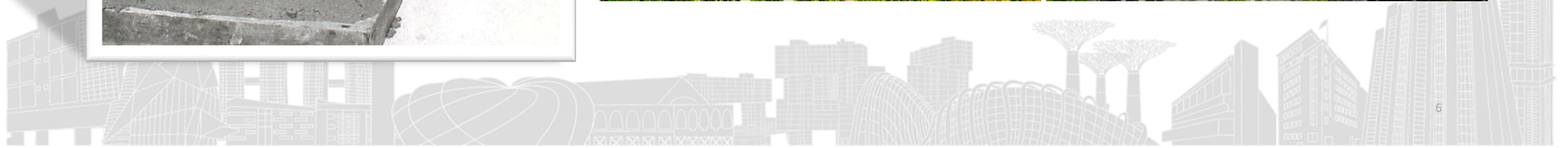
THE ARBINGER INSTITUTE

Bestselling Authors of *Leadership and Self-Deception* and *The Anatomy of Peace*

EXPANDED SECOND EDITION



Our Story – What Drives Us



Do Well Do Good

Do Well: Build sustainable businesses

Do Good: Positively impact lives across generations

Excellence

Ownership

Agility

Integrity

Benevolence



Credo

Enriching Lives & Building Sustainably

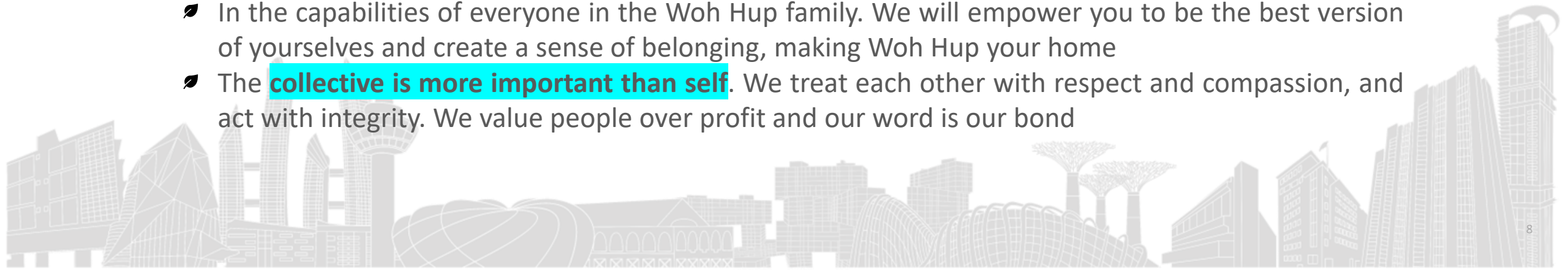
We exist because we are **leaders in shaping the Built Environment sector into a dynamic industry** where **talents find an enriching career and thrive by creating lasting value everyday**

We Deliver Through

- ✦ Striving for excellence and **continuous improvement**, embracing adversity, knowing that we will have each others' backs
- ✦ **Adopting a learners' mindset**, where all of us remain humble to learn from mistakes and **build agility to change**. We will stay ahead of market trends and adopt relevant technology, think out of the box and take calculated risks

We Believe

- ✦ In the capabilities of everyone in the Woh Hup family. We will empower you to be the best version of yourselves and create a sense of belonging, making Woh Hup your home
- ✦ The **collective is more important than self**. We treat each other with respect and compassion, and act with integrity. We value people over profit and our word is our bond



Project Haven



Arrival of workers at PDPP facility



Registration and Briefing to workers



Undergoing COVID test during quarantine



Arrival of workers at MOM Onboard Centre in Singapore



Waiting at airport for chartered flight to Singapore



Leaving PDPP facility for departure to SG

Key Collaborators:

Government Agencies - BCA, EDB, MOH, MOM, MOT and MTI

Private Sector - Fullerton, PSA, SCAL, Soilbuild and Woh Hup

Achievements: >6,000 MWs infection free

Precast Solutions



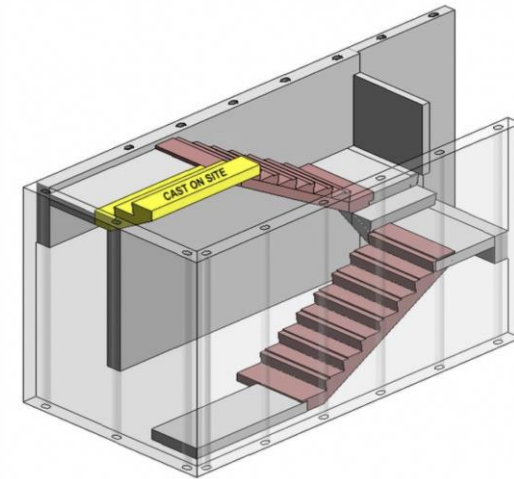
Prefab MEP Riser

- Projects implemented: 3
- Projects to implement: 3
- Productivity Improvement: 30 - 40%



Prefab Lift Shaft

- Project to implement: 1
- Productivity Improvement: 40%



Precast Staircase Module

- Projects to implement: 5
- Productivity Improvement: >50%

Robotics



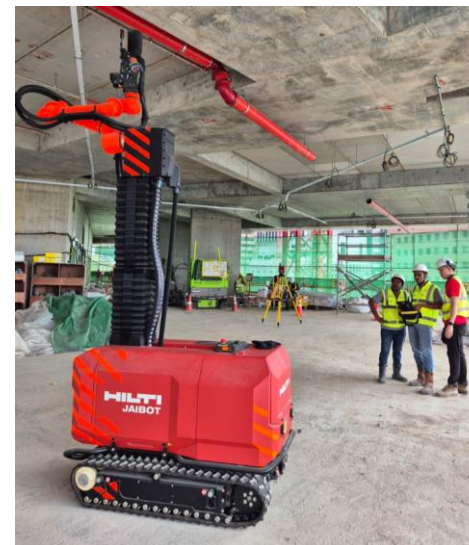
Fabrica - Grouting Robot

- Projects implemented: 2
- Projects to implement: 3
- Productivity Improvement: 60%



Tomorobo - Rebar Tying Robot

- Project implemented: 1
- Projects to implement: 2
- Productivity Improvement: 40%



Jaibot - Drilling Robot

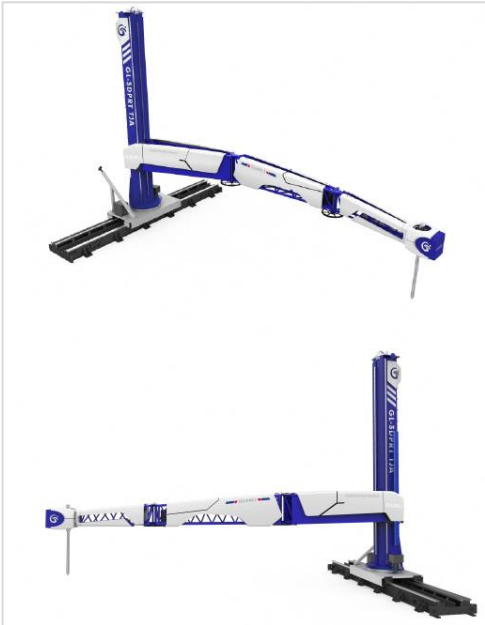
- Projects to implement: 2
- Productivity Improvement: 40% - 50%



We-I-Build - Wall Painting / Plastering Robot

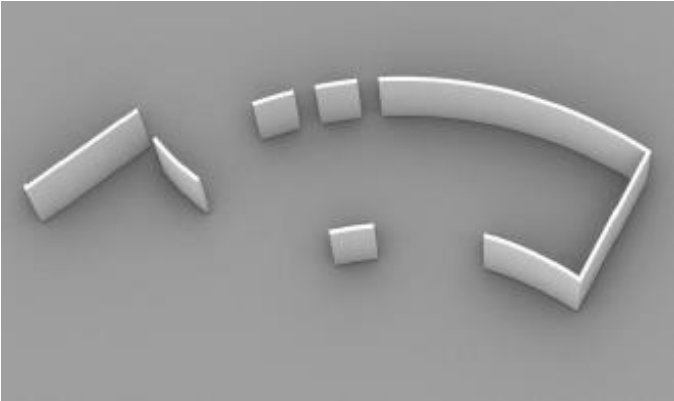
- Projects to implement: 4
- Productivity Improvement: 50% - 70%

3D Printing



3D Printing Robot

- Project to implement: 1



3D Printed PBU

- Project to implement: 1
- Productivity Improvement: 75%

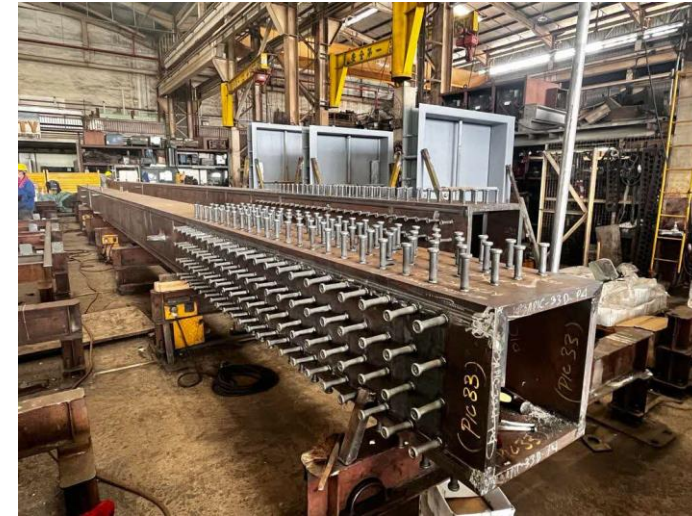
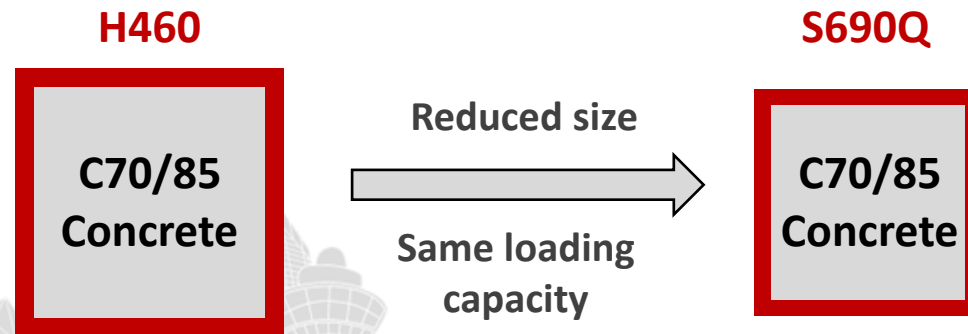


Technical Innovation – S690 King Posts

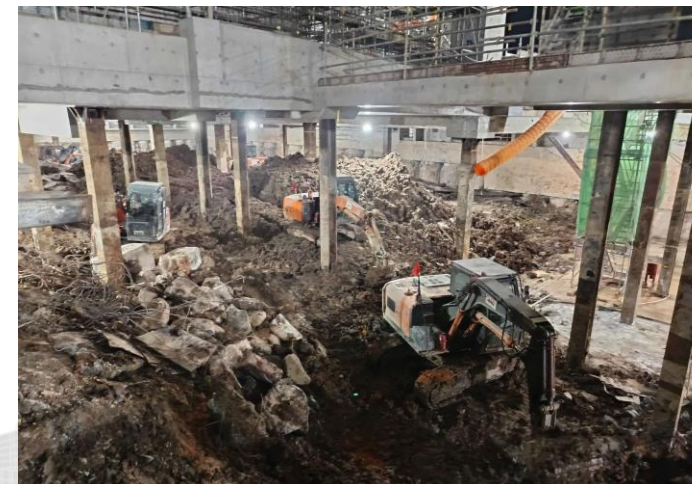
WH x SIT: CTIL

Project	Steel Tonnage		Steel Tonnage Difference (%)
	H460 (ton)	S690Q & H460 or S355 (ton)	
A	959	547	43.0%
B	842	491	41.7%

Using of S690 high-strength steel leads to reduction of column/kingpost size and self weight of building.



First in the world to be adopted to support >20 storey building



Technical Innovation – S690 King Posts



Greater Collaborative Success

- ★ Scoring for mindset/culture
- ★ Measuring longer term goals
- ★ Setting of flexible guardrails for decision makers



Thank You

